

National curriculum tests

Key Stage 1

Mathematics

Practice Paper 1: reasoning

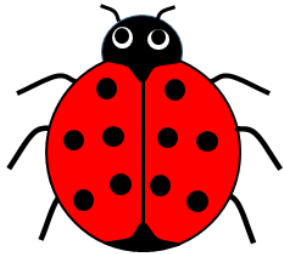
Time: about 35 minutes
No calculator allowed
35 marks

First name	
Middle name	
Last name	



Total marks	
-------------	--

Practice Question



spots

1

5 5 5 1 1
 5 5 1 1 1 1
5 5 1



1 mark

Ref: 2N3

2

vegetables

Ref: 2C4



1 mark

3

Two empty rectangular boxes for writing.

Ref: 2N1



1 mark

4

50

3



1 mark

Ref: 2C2b

5

51

59

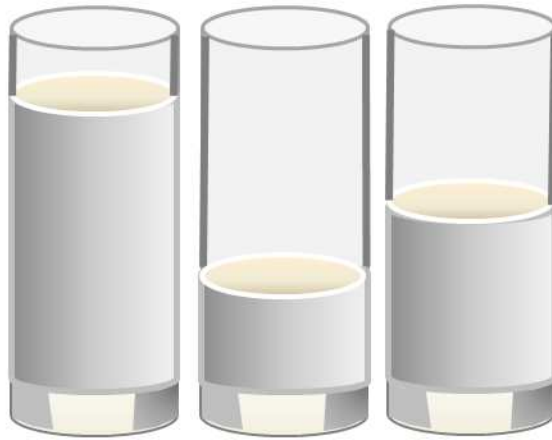


1 mark

Ref: 2C6

6

Which glass is **more than half** full (✓)

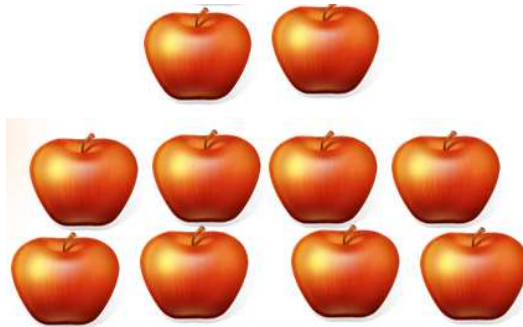


1 mark

Ref: 2M1

7

Poppy had **ten** apples and gave **three** to Henry.



How many apples does Poppy have left?

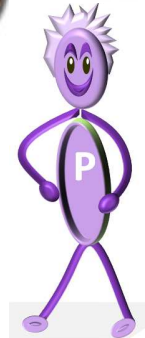


1 mark

Ref: 1C4

8

Poppy (P) and Henry (H) each had some coins.
Tick who had the most money?



1 mark

Ref: 1M3

9

For each number word, tick (✓) the correct number.

The first one is done for you

21**Twenty one****201****407****forty seven****47****508****Fifty eight****58****34****thirty four****304**

1 mark

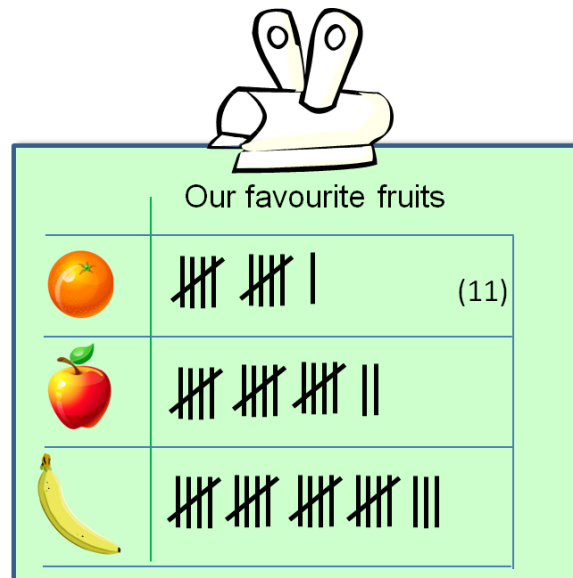
Ref: 2N2a

10

This tally chart shows a class's favourite fruits.

11 children liked oranges.

How many children liked apples and how many liked bananas



Apples

Bananas

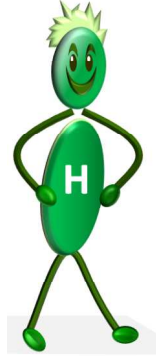


1 mark

Ref: 2S1

11

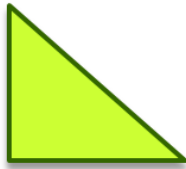
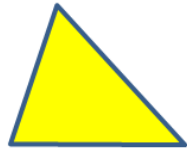
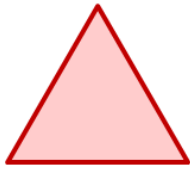
Poppy had a carton with 30 chips.
She gave 7 chips to Henry.
How many did she have left.



1 mark

Ref: 2C4

12 Draw lines to match these triangles with their names



equilateral

right angled

scalene

isosceles



1 mark

Ref: 2G2a

13 Write two numbers to make this calculation correct.

$$\square + \square = 17$$

Now write three numbers to make this calculation correct.

$$\square + \square + \square = 17$$

Ref: 2C1

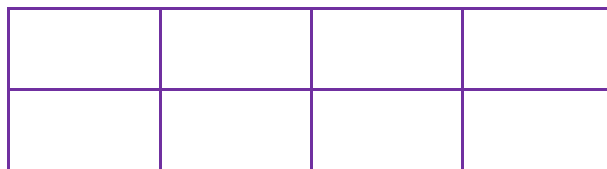


1 mark



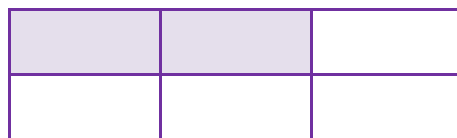
1 mark

14 a) Shade one quarter of this shape.



1 mark

b) What fraction of this shape is shaded



$$\frac{1}{\square}$$



1 mark

Ref: 2F1a

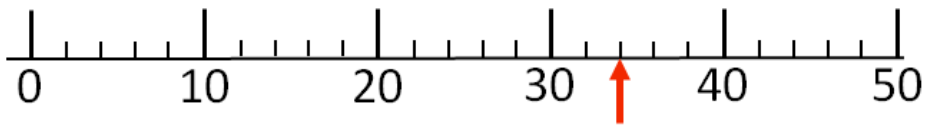
15 Poppy had some coins.
How much money does she have?



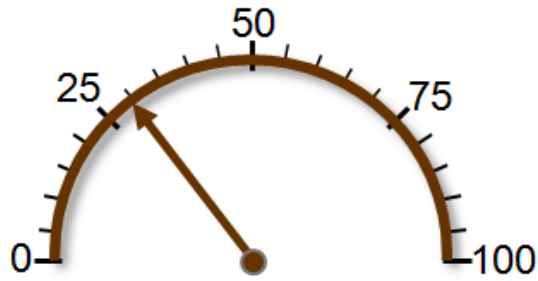
1 mark

Ref: 2M9

16 What number does the arrow point to



What number does the arrow point to



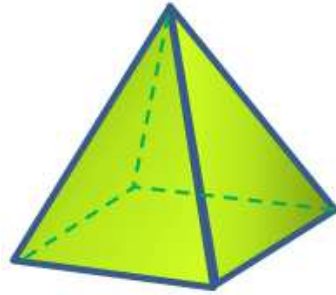
1 mark



1 mark

Ref: 2N4

17 How many edges does this square based pyramid have?



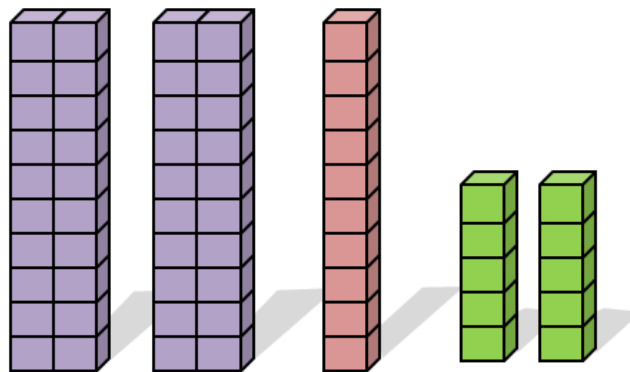
edges



1 mark

Ref: 2G2b

18 Poppy and Henry shared these blocks equally



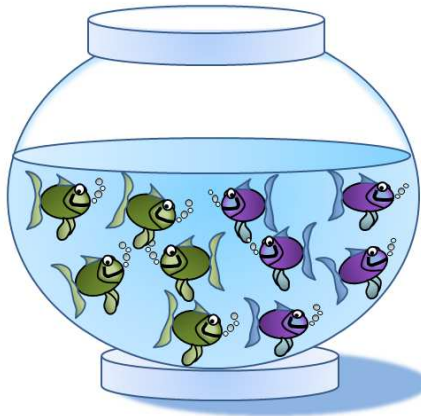
How many blocks do they each get



1 mark

Ref: 2C4/2C8

19 Poppy wants 40 fish for her garden pond
There are 10 fish in a bowl.



How many bowls does she need altogether



1 mark

Ref: 2C8

20 Henry has **25** stars altogether.
He has **12** stars in one hand.



How many stars does he have in the other hand?

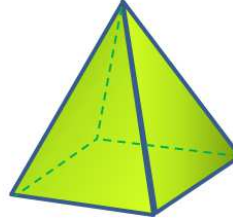
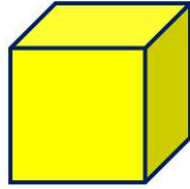


1 mark

Ref: 2C4

21

Draw lines to match the 3D shape to their names



Sphere

Pyramid

Cube

Square

1 mark

Ref: 1G1b

22

Oranges cost **20p** each. Bananas cost **25p** each.



Poppy bought **1 orange** and **2 bananas**.

How much **change** does she get from **£1**?

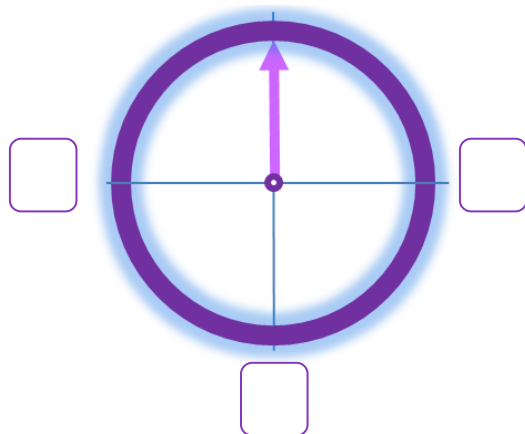
p

1 mark

Ref: 2C4

23

Where is the pointer after a clockwise three-quarter turn (✓)

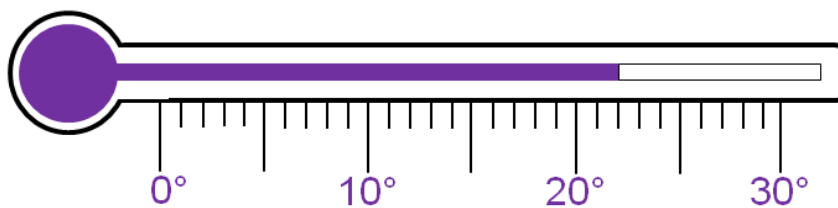


1 mark

Ref: 2P2

24

Look at the thermometer.



What temperature is shown?

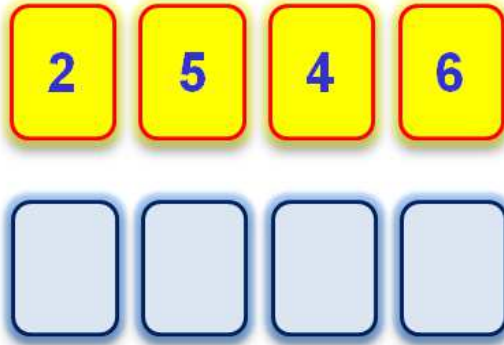
 °C

1 mark

Ref: 2M2

25

What is the biggest number you can make from these digits?

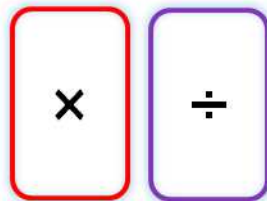


1 mark

Ref: 2N6

26

Look at these signs



Write the correct sign in each box.

$$12 \quad \square \quad 2 \quad = \quad 2 \quad \square \quad 3$$

$$4 \quad \square \quad 5 \quad = \quad 1 \quad \square \quad 20$$

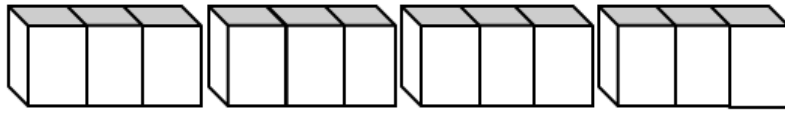


1 mark

Ref: 2C7

27

Look at the blocks



$$\frac{3}{4} \text{ of } 12 = \boxed{} \quad \frac{1}{2} \text{ of } 12 = \boxed{}$$



1 mark

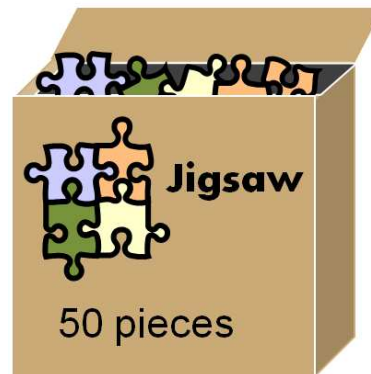
Ref: 2F1a

28 There are 50 jigsaw pieces in a box.

Henry takes 11 pieces.

Poppy takes 12 pieces.

How many jigsaw pieces are left?



Show
your
working

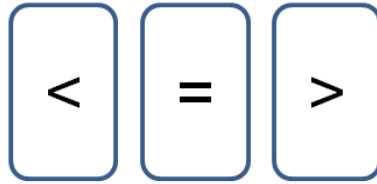
pieces

2 marks

Ref: 2C4

29

Look at these signs



Write the correct sign in each box

$3 + 3$

7

8×2

$10 + 6$

$10 \div 2$

4×1



1 mark

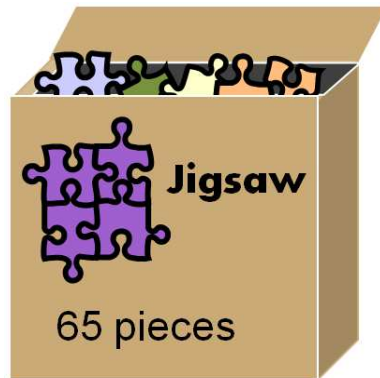
Ref: 2N2b

30 A jigsaw box should have 65 pieces.

Henry counted the pieces.

There are only 47

How many pieces are missing?



pieces

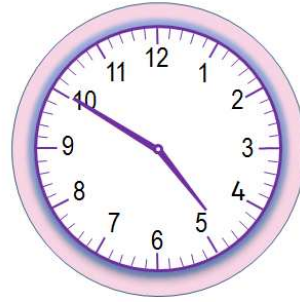
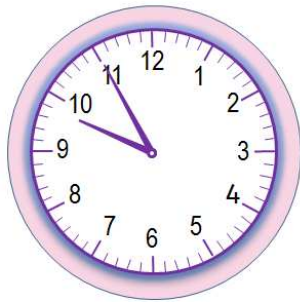
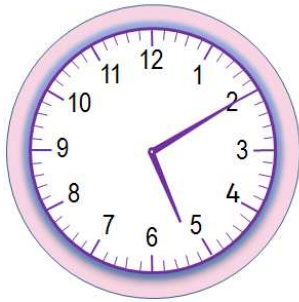


1 mark

Ref: 2C4

31

Tick (✓) the clock that shows five to ten



Ref: 2M4a



1 mark

End of Test